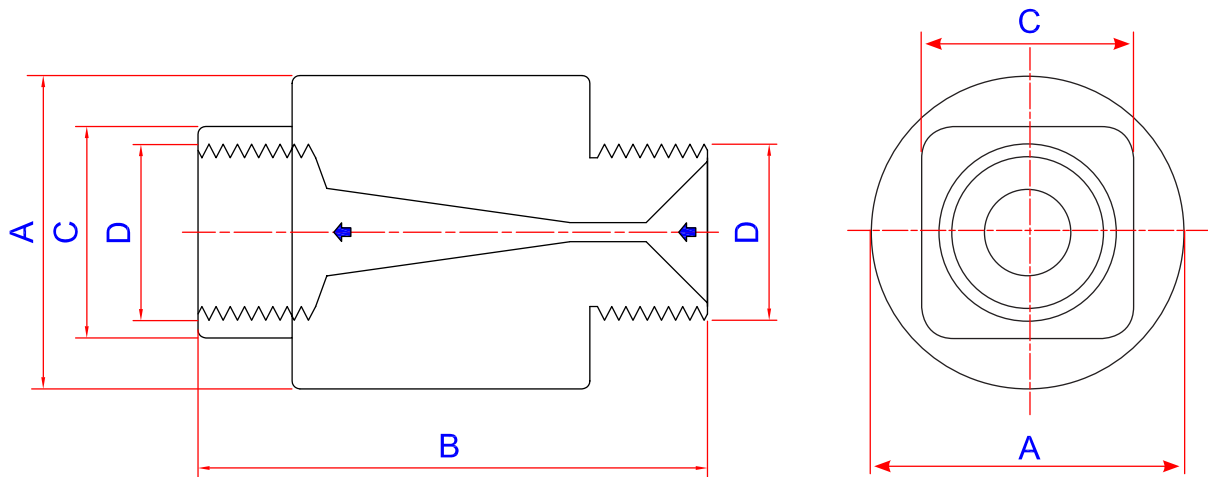




deltaindustries

MODEL SDT . SCREWED VENTURI ORIFICE STEAM TRAP

NB 15, 20, 25, 40 & 50



Size	A	B	C	D
15	40	65	27	1/2" BSP
20	50	65	32	3/4" BSP
25	50	70	41	1" BSP
40	100	160	50	1 1/2" BSP
50	100	170	60	2" BSP

Description

A one piece complete stainless steel venturi orifice steam trap with no moving parts, suitable for all steam trapping applications

Benefits

- Venturi orifice steam trap with no moving parts
- Complete stainless steel construction
- No spare parts required
- No more steam leakage
- Reduced CO2 emissions
- Handles varying or constant loads
- Easily handles water hammer
- Zero Maintenance

Applications

- Steam mains drainage
- Tracer lines
- Cooking pots
- Sterilisers
- Autoclaves
- Batch Process Applications
- Heat exchangers
- Control valve applications
- Steam coils

Additional fittings

- All steam traps come standard with the following:
 - complete stainless steel strainer (if required)
 - complete stainless steel blowdown valve (if required)

**Automatic air venting at start up and in continuous operation.
Perfect operation in vertical or horizontal installation.**



deltaindustry



deltaeco



deltasteam



deltaindustries

Pressure / Temperature Rating

PMO (Maximum Operating Pressure)	55 bar / 120 bar
PMT (Maximum Operating Temperature)	400°C / 325°C

Connections

Screwed BSP / NPT	15 - 25mm
Butt weld	15 - 25mm

Materials

MATERIALS	ASTM	DIN Equivalent
Complete trap	AISI 303	Din 1.4305

Weights (kg)

WEIGHTS (KG)	END CONNECTIONS	
	Screwed / Butt Weld	
15	1.00	1.00
20	1.00	1.00
25	1.50	1.50
40	6.00	6.00
50	8.50	8.50

2



Delta Industries, PO Box 4738, Tygervalley, 7536
 Cape Town, South Africa
 Tel: +27 21 948 9677
 Email: info@delta-industries.com
 Web: www.delta-industries.com



deltaindustry



deltaeco



deltasteam